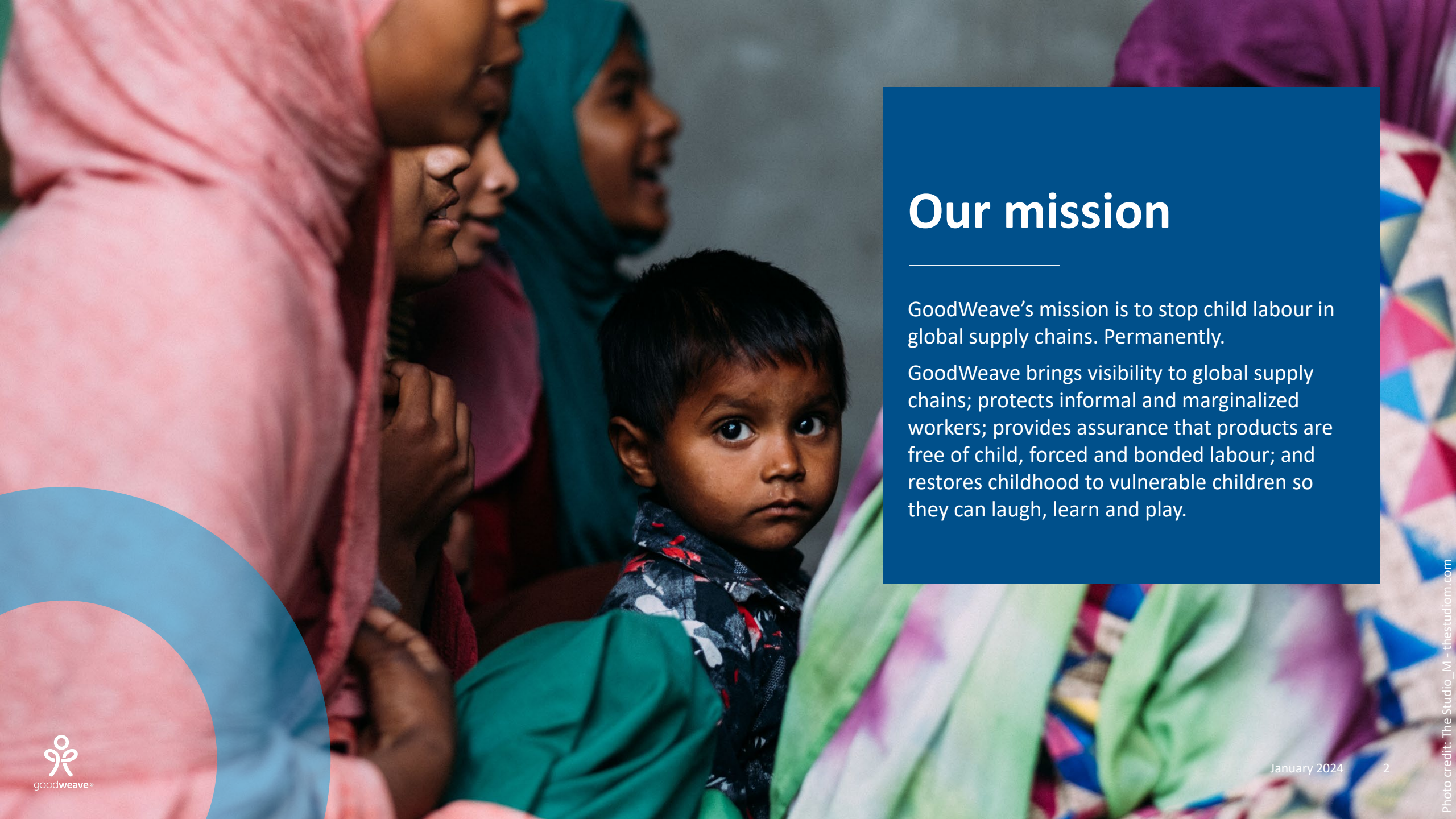




goodweave®

# Benefits of GoodWeave's licensing programme for apparel and fashion jewellery exporters

January 2024



# Our mission

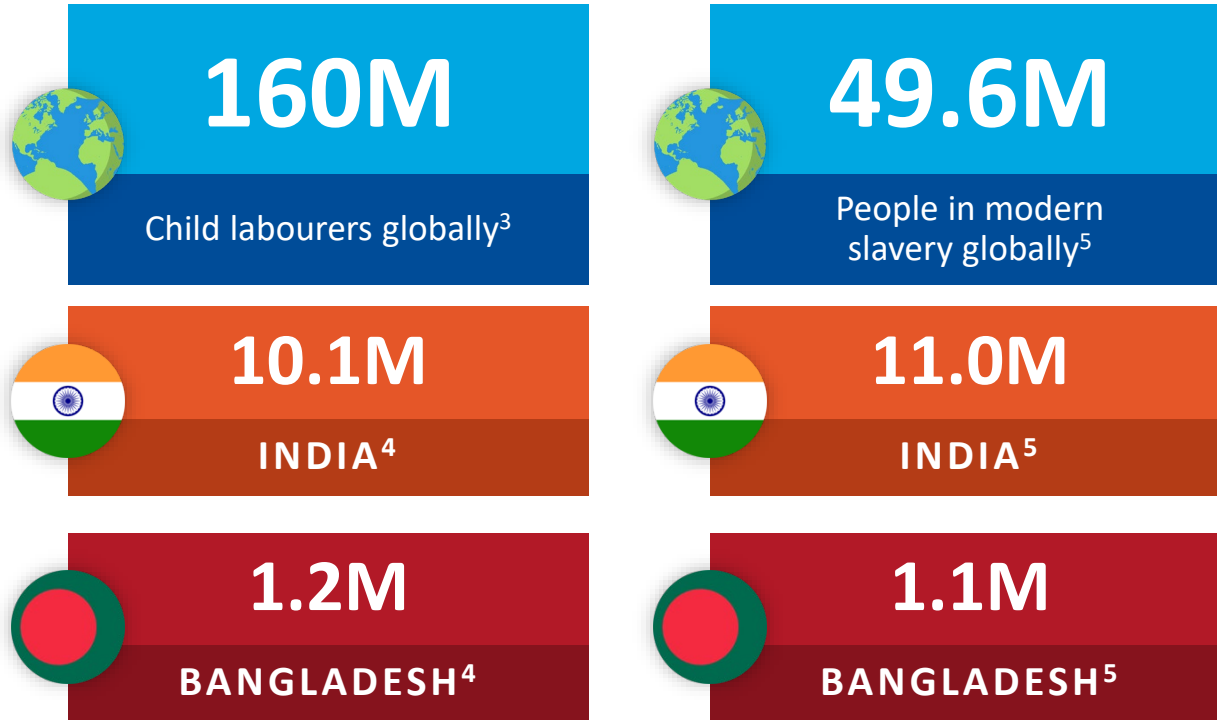
---

GoodWeave's mission is to stop child labour in global supply chains. Permanently.

GoodWeave brings visibility to global supply chains; protects informal and marginalized workers; provides assurance that products are free of child, forced and bonded labour; and restores childhood to vulnerable children so they can laugh, learn and play.



# Child, forced and bonded labour are widespread in global supply chains

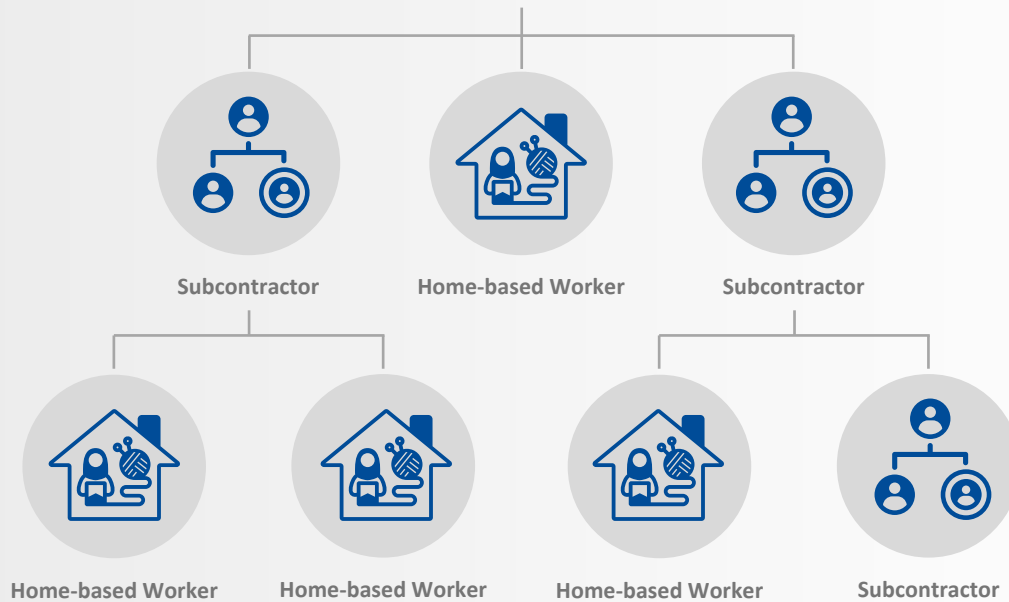


Child and forced labour is documented in 159 products in 78 countries, including carpets, embellished textiles, fashion accessories, garments, leather goods and textiles.<sup>1</sup>

There is widespread exploitation in outsourced supply chains, including in subcontracting facilities and home-based worksites.<sup>2</sup>

Global progress against child labour has stalled and is likely to push a further 8.9 million children into labour as a result of rising poverty driven by the COVID-19 pandemic.<sup>3</sup>

Girls work with their mothers to meet ambitious apparel or fashion jewellery quotas for extremely low piece rate pay in home-based settings.<sup>2</sup>



# Exploitation in subcontracted production is a risk to your business

**Child, forced and bonded labour are crimes** under national and international laws. Suppliers associated with these forms of exploitation risk public exposure and loss of business.

**Buyers are seeking further assurance against exploitation** in their supply chains due to consumer pressure and increasing human rights due diligence legislation that requires full supply chain oversight and remediation.

**Prevention and remediation efforts are lacking, but essential.** It is difficult to have oversight of sub-contracted tiers of production, and monitoring efforts alone do not solve the problem without preventative measures and remediation.

# Deep supply chain due diligence that stops child, forced and bonded labour



## Deep Supply Chain Mapping

GoodWeave maps the complete supply chain, from primary manufacturing facilities to outsourced production, including home-based sites.



## Inspection and Monitoring

GoodWeave conducts initial audits and random, unannounced inspections, measured against the **GoodWeave Standard**.



## Remediation

GoodWeave offers remedy to child and adult victims of exploitation and works with suppliers to improve conditions.



## Prevention

GoodWeave implements programmes in producer communities to address the root causes of child labour and ensure children have access to education. programmes also address health and conditions of work for adults.

# Licensing programme

This programme is **invite-only**. GoodWeave brand partners must invite their supplier to commence their application to join the programme.

Through the programme, suppliers **better understand** where risk lies in supply chains, **remediate issues and improve practices across their operations**.



## HOW TO PARTICIPATE IN THE PROGRAMME

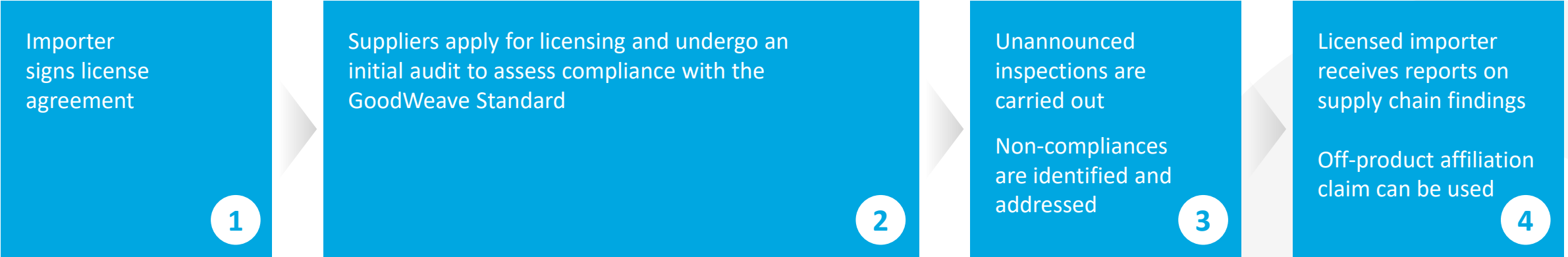


Photo credit: The Studio\_M – [www.thestudio.com](http://www.thestudio.com)



# Business benefits

- **Supply chain transparency:** Gain full visibility into your supply chains and take necessary corrective action to eliminate child, forced, and bonded labour with GoodWeave's support
- **Competitive advantage:** programme participation is regarded positively by brands as they face increasing pressure to comply with international human rights supply chain due diligence legislation
- **A more stable workforce:** GoodWeave's programme brings free services to worker communities, all with the goal to make permanent changes that prevent exploitation and improve quality of life
- **Support children's education:** GoodWeave implements community-level education programmes that address the root causes of child labour



# Our credibility



GoodWeave is a nonprofit organisation founded in 1994 by Nobel Peace Prize Laureate Kailash Satyarthi

An independent, global organisation with teams in the US, Europe and Asia

GoodWeave is [ISEAL](#) Code Compliant. Our system has been independently evaluated against ISEAL's Codes of Good Practice—a globally-recognized framework for effective, credible sustainability systems.



GoodWeave is a member of [Ethical Trading Initiative](#) and [German Partnership for Sustainable Textiles](#) and an ambassador for the [Dutch Fund against Child Labour](#).<sup>1</sup>

GoodWeave's founding CEO has been awarded the Skoll Award for Social Entrepreneurship and the Schwab Foundation Award for Social Entrepreneurs.



# Our donors



Netherlands Enterprise Agency

SEAMONT  
FOUNDATION



Janet Wright Ketcham Foundation

Laudes ———  
—— Foundation



UBS Optimus  
Foundation



Funding provided by the United States Government

# 195+ brand partners in 22 countries

 macy's

RIVER ISLAND

ASOS

 jacaranda  
CARPETS & RUGS

THE  
RUG  
COMPANY  
HANDMADE

OTTO

# The GoodWeave System and impact

Nearly 30 years partnering with companies to create child-labour-free supply chains through a market-based system and holistic approach



## HARNESS MARKET FORCES

195+ brand partners programmes in carpets, home textiles, apparel, and other sectors

38+ million products certified

1



## CLEAN UP SUPPLY CHAINS

8,000+ active worksites in GoodWeave inspected supply chains

10,300+ children freed

2



## CREATE EDUCATIONAL OPPORTUNITIES

81,000+ children directly provided educational opportunities

35 Child-Friendly Communities created

3



## IMPROVE CONDITIONS FOR ALL WORKERS

110,000+ workers protected under the GoodWeave Standard in 2023

4



## PROMOTE BEST PRACTICES

Partnership and capacity building projects: apparel in Bangladesh, bricks in Nepal, tea in India

5



# What our partners say

Over 90% say they joined GoodWeave because of a commitment to ending child labour.

Over 60% say GoodWeave's partnership has enhanced their company's reputation.

56% say their customers ask how they are ensuring child labour is not used in the making of their products.



GoodWeave PSA's in major publications educate consumers about the programme and contribute to enhancing partner's reputations

“

Our company has been partnering with GoodWeave since 2015. GoodWeave's team's expertise and dedication has made our partnership a success.

Naveen Sharma  
H.R Admin & Compliance Head,  
Vinty Impex Pvt. Ltd.

”

“

GoodWeave's programme is unique because it helps enhance transparency and accountability in supply chains, which is not only important for buyers but also for respectable exporters. Also, it goes the extra mile providing support to children and workers in the producing communities that are our home.

Meenakshi Sarna  
Creative Director and Co-Founder,  
Eastern Heritage

”

A woman in a red and white patterned sari is smiling and looking towards the right. She is operating a spinning wheel. In the background, another woman in a blue and white sari is also working. The setting appears to be a textile factory or workshop with stone walls.

INCREASED VISIBILITY, INCREASED  
IMPACT: STORIES OF CHANGE

## Mapping a large retailer's supply chain

When a large importer signed up as a GoodWeave licensee, its carpet supplier list included 22 units.

The importer had a compliance programme in place, but no visibility into outsourced production.

Over a period of three years, GoodWeave mapped 1,386 outsourced production units in their supply chain and identified 120 child labourers.



INCREASED VISIBILITY, INCREASED  
IMPACT: **STORIES  
OF CHANGE**

## Muskaan's story

---

Muskaan was found helping her mother with beadwork during a surprise inspection at her home. The GoodWeave team learned that she was under 14 years old and not going to school.

Her father was not comfortable with her going to school in their conservative community. The GoodWeave team and Muskaan's mother helped convince her father to support Muskaan's wish to go to school.

Muskaan is now studying English, Hindi and math, and no longer part of the hidden apparel supply chain. She will be the first literate person in her family.

[Watch her story here.](#)







# Frequently asked questions

## **Q. What are the costs of GoodWeave's licensing programme?**

Participating importers and exporters both pay a licensing fee to be part of the programme. Please contact us for more details.

---

## **Q. What are the GoodWeave Standard requirements?**

The Standard is comprised of three Principles: 1) No child labour is allowed, 2) No forced or bonded labour is allowed, and 3) Conditions of work are documented and verifiable. It also includes Progress Principles, which are designed to address a broader range of labour and environmental issues.

---

## **Q. Are you already working where I source?**

The apparel programme is currently operating in Northern India. By providing a list of your exporters, we are able to identify the locations and product categories that align with GoodWeave's current footprint.

---

## **Q. I do not employ children in my factories. Why should I join?**

In GoodWeave's experience, most child, forced and bonded labour issues are identified in subcontracted supply chains. As international due diligence legislation becomes stricter, there is more pressure on companies to have full visibility into their supply chains and to ensure issues like child, forced and bonded do not exist, including at subcontracted worksites. GoodWeave's programme helps exporters gain oversight of subcontracted tiers of production and reduce child and forced labour risk.



goodweave®

**Become a GoodWeave partner.  
Doing the right thing for your  
business has never been easier.**

**Contact us today to learn more.**

---

**[navneet@goodweave.net](mailto:navneet@goodweave.net)**

